

第 63_1 项训练：舒尔特方格

训练提示：请根据教案操作方法操作，并做好时间记录工作。

3	4	9
6	5	2
1	8	7

6	1	2
9	8	7
4	5	3

使用日期：

计时：

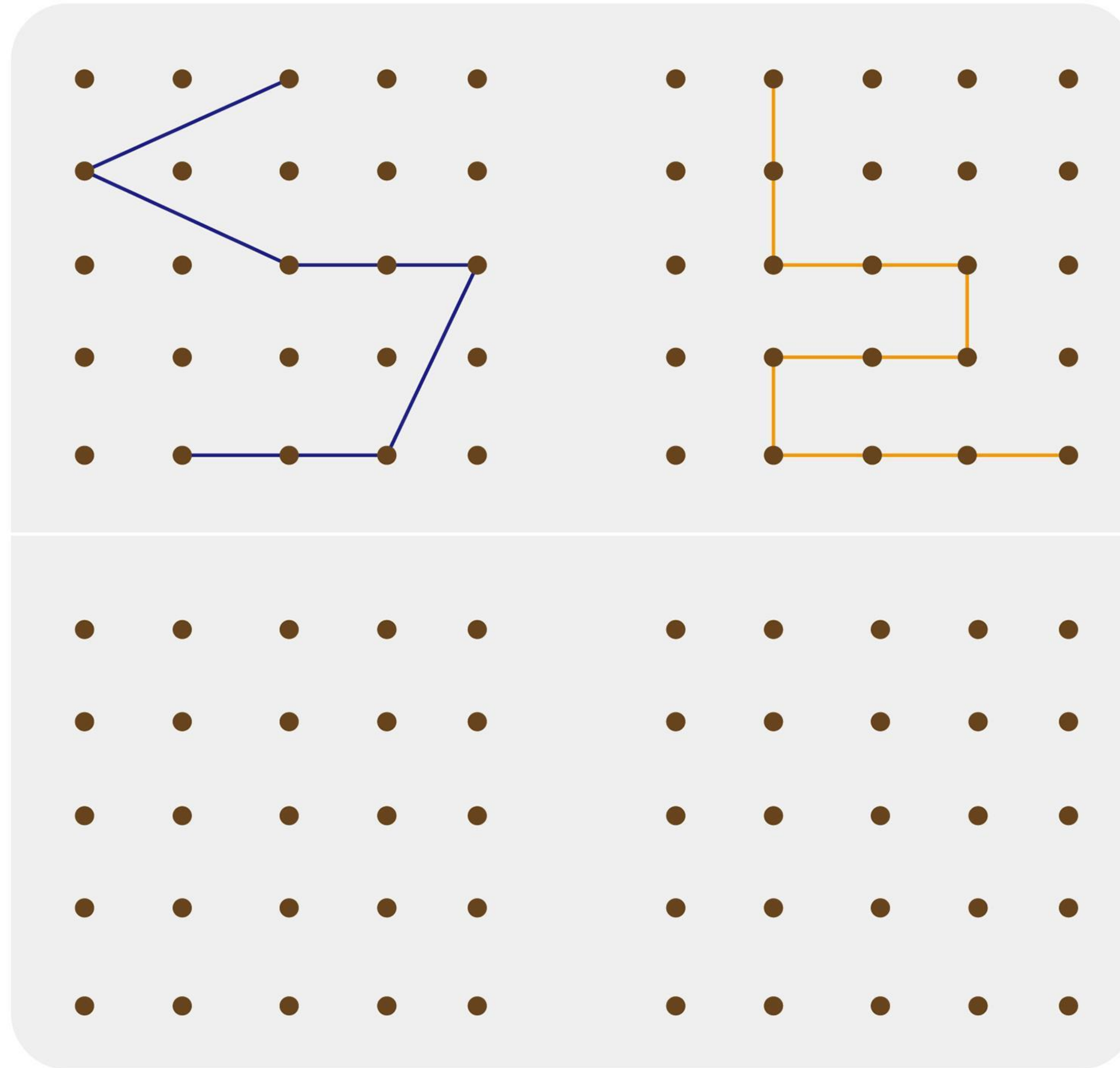
分

秒

错误：

评语：

第 63_2 项训练：矩阵运笔



The image shows a 5x5 dot grid divided into two horizontal sections. The top section contains two paths: a blue path and an orange path. The blue path starts at the second dot from the left in the second row, moves to the third dot in the first row, then to the fourth dot in the second row, then to the fifth dot in the second row, then to the fourth dot in the third row, then to the fourth dot in the fourth row, and finally to the second dot in the fourth row. The orange path starts at the second dot from the left in the first row, moves to the second dot in the second row, then to the third dot in the second row, then to the fourth dot in the second row, then to the fourth dot in the third row, then to the fourth dot in the fourth row, and finally to the fifth dot in the fourth row.

使用日期:

计时:

分 秒

错误:

评语:

第 63_3 项训练：九宫格

训练提示：请根据教案中的操作方法操作，并如实记录错误数量。



使用日期：

计时：

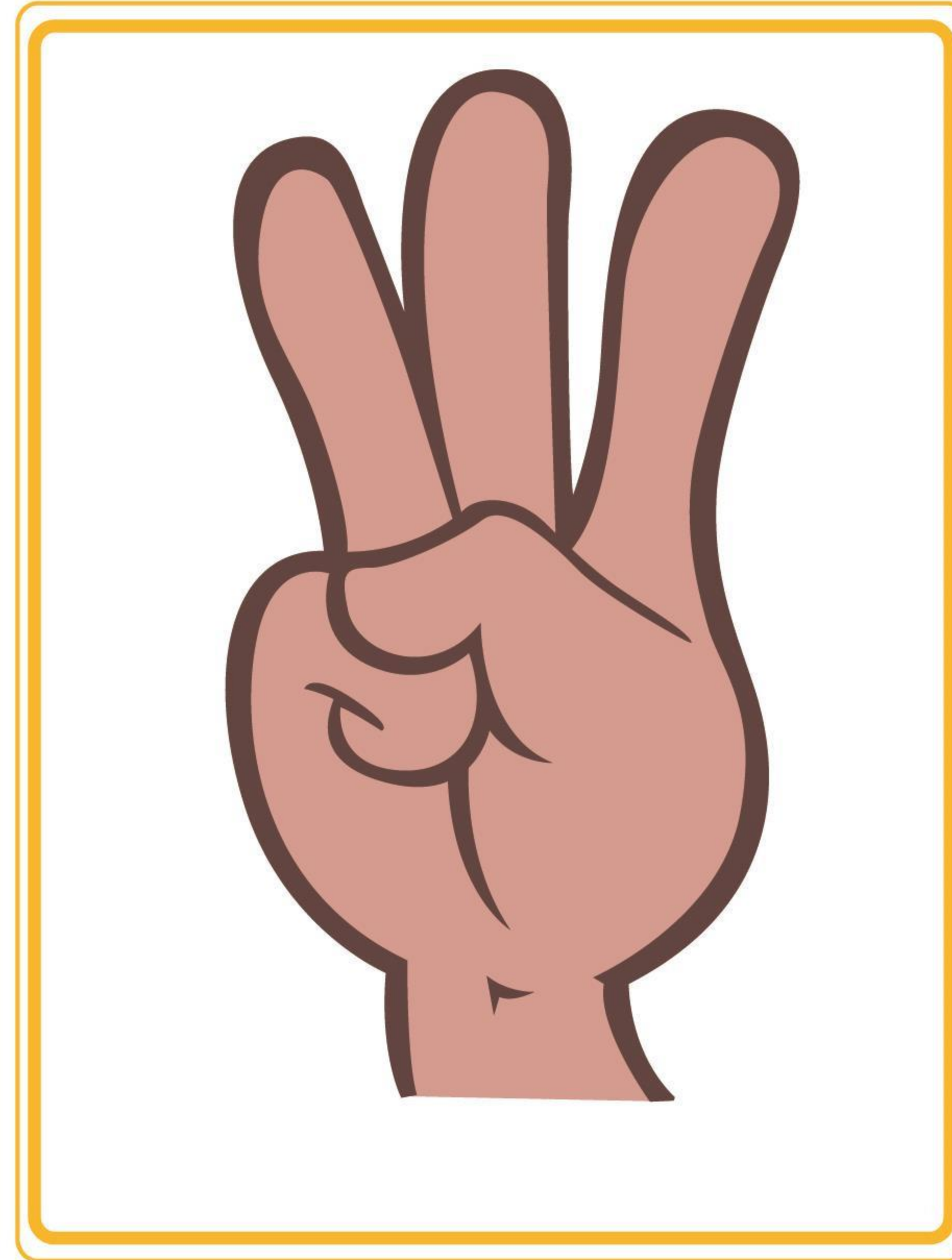
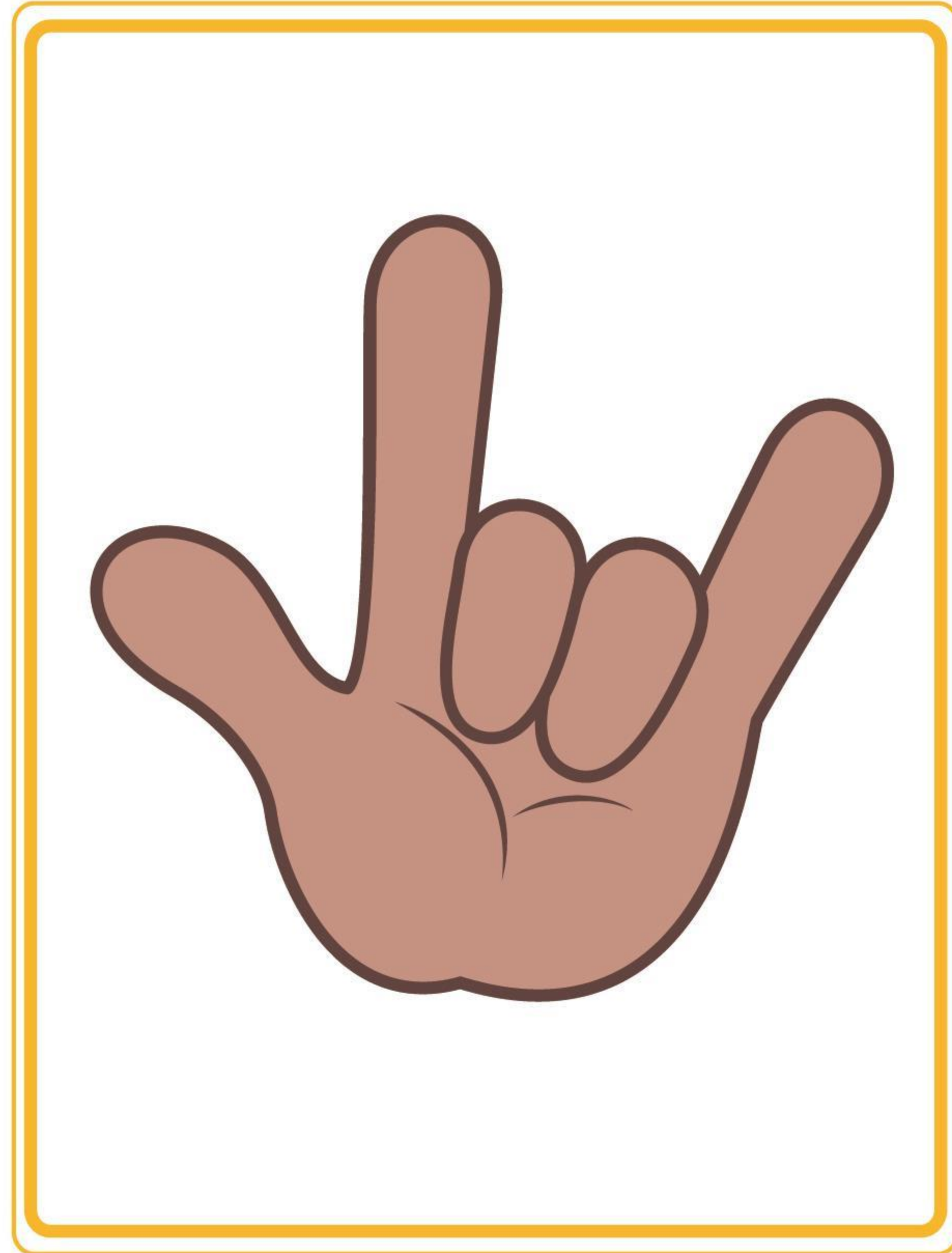
分

秒

错误：

评语：

第 63_4 项训练：左右手位



使用日期:

计时: 分 秒

错误:

评语: